



ALDEA SAVIA

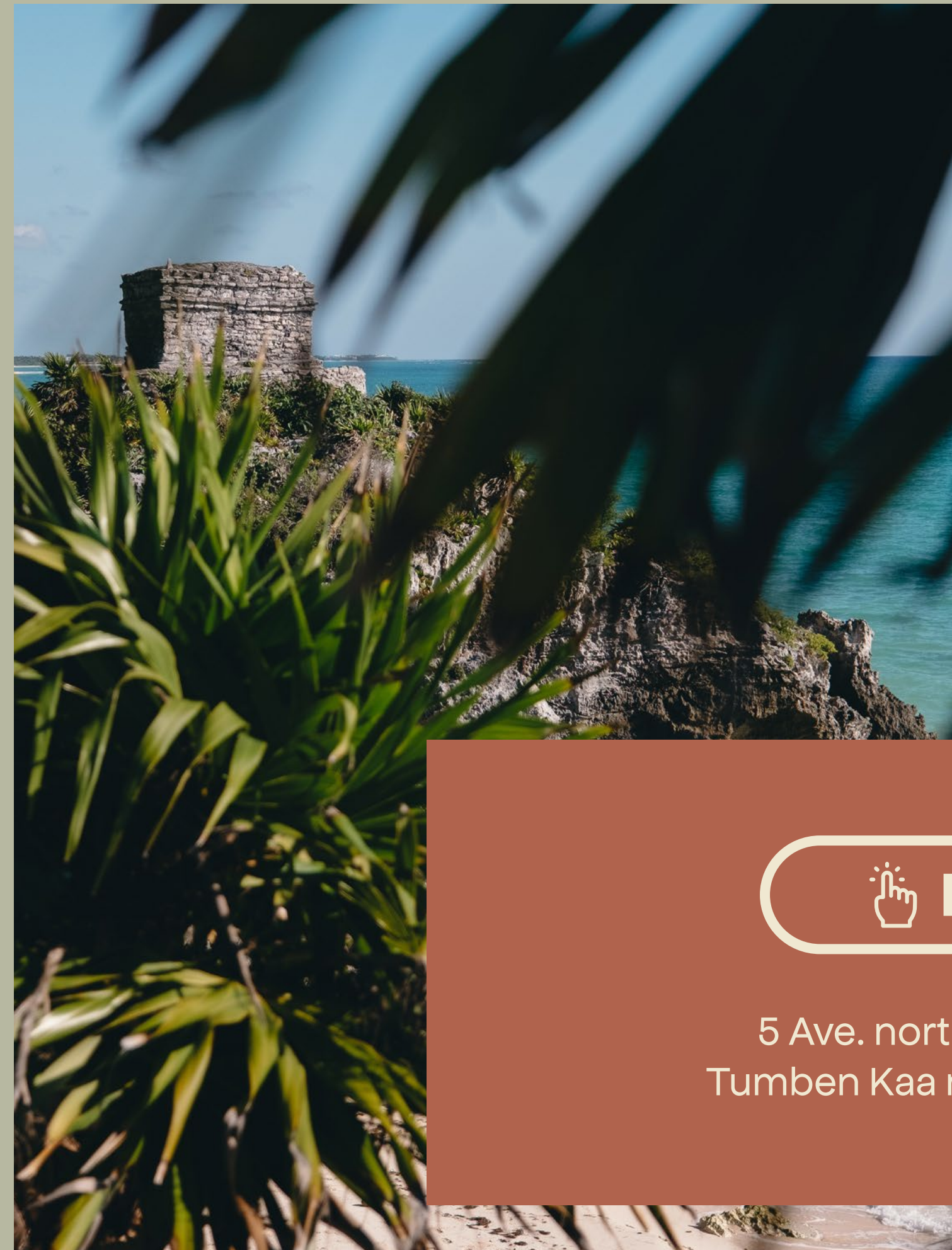
TULUM

Emerging community in the Mayan jungle.
Its walls contain the balance between nature and its
community, remaining in full harmony with
Mother Earth.

DESTINATION

Tulum, a destination of choice for those looking for a second home for vacation or for a lifestyle that allows them to be in **contact with the natural enviroment.**

The Mayan jungle is the main attraction of Tulum, in addition to its crystalline waters beaches and gastronomy.



 LOCATION 

5 Ave. north, 012 Region, Smza 006, C. 19
Tumben Kaa neighborhood, 77760 Tulum, Q.R

PHASE 1 – SOLD OUT

PHASE 2 – LAST UNITS

PHASE 3 – PRESALE



- P1 PHASE 1
- P2 PHASE 2
- P3 PHASE 3

PROTOTYPES

TAMAY



Lot area 2088.2 ft²
Front 26.24 m. / Back 78.74 m.



Living area 2674.83 ft²



3 Bedrooms



3.5 Bathrooms



2 Levels



2 Parking spaces

OTHERS

- Laundry room
- Terrace
- Garden
- Roof top



*The renderings and models of the units are illustrative and informative and may differ from the final product. Furniture is not included.



EDGE CERTIFICATION

“Excellence in design for greater efficiencies”

An EDGE certified project has been audited to prove that it **saves 22% energy, 34% water and 62% *embedded energy** in materials compared to a local baseline. This means that it **is 20% more efficient** than a typical project and that its operating consumptions will be reduced.

Each **TAMAY** unit has its EDGE certificate.

* Embedded energy: total energy consumed in the construction of a project. This includes the energy used in manufacturing of the materials, their transportation and that used by the machinery during the execution of the work.

CHACA GARDEN

 Lot area 1692.62 ft²

 Living area 945.60 ft²

 2 Bedrooms

 2 Bathrooms

 1 Level

 1 Parking space


OTROS

- Laundry room
- Garden



*The renderings and models of the units are illustrative and informative and may differ from the final product.
Furniture is not included.

CHACA ROOF

 Lot area 1442.36 ft²
Front 22.80 ft. / Back 59.05 ft.

 Living area 1442.36 ft²

 2 Bedrooms

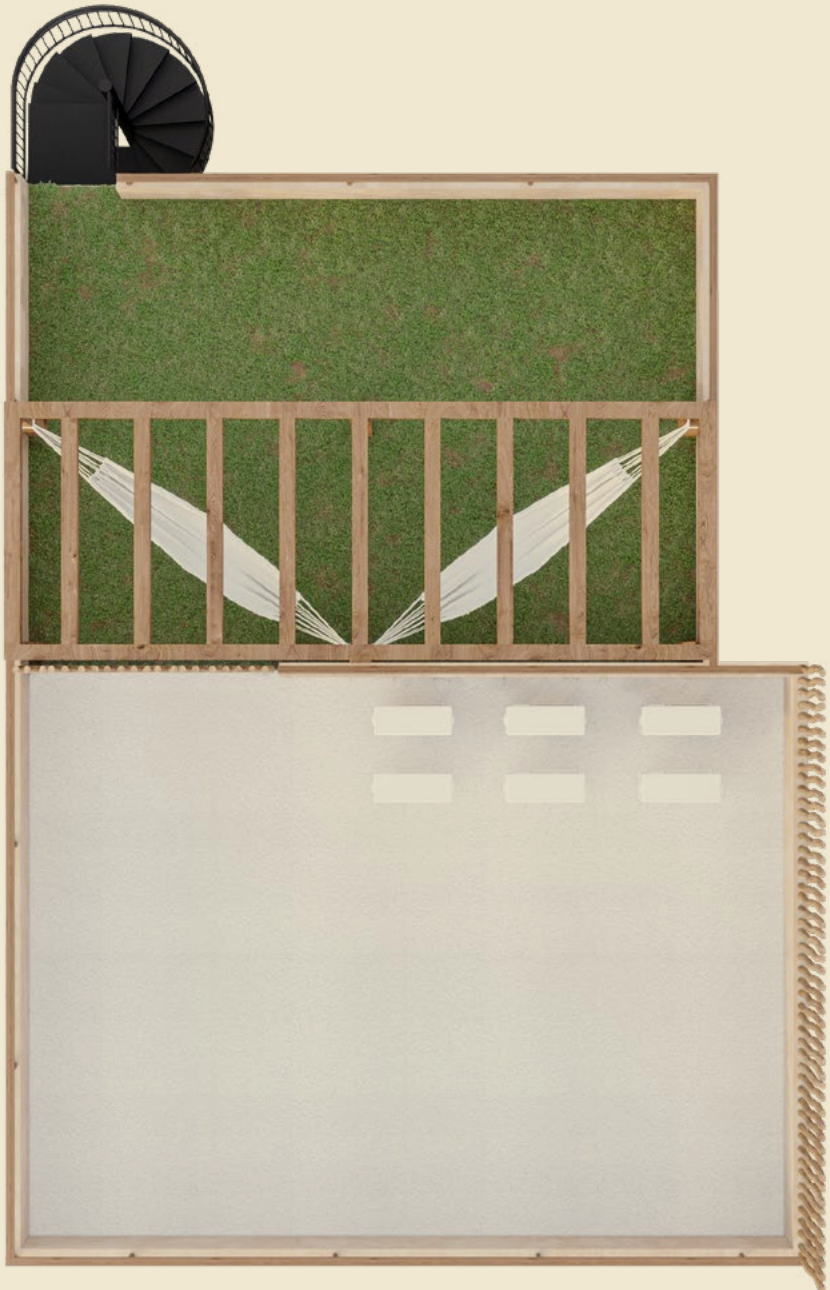
 2 Bathrooms

 1 Level

 1 Parking space

OTROS

- Laundry room
- Terrace
- Roof top



*The renderings and models of the units are illustrative and informative and may differ from the final product.
Furniture is not included.



RENDER



REALITY



*The renderings and models of the units are illustrative and informative and may differ from the final product. Furniture is not included.

ARALIA - TYPE C



Lot area from 624.30 to 1603.82 ft².



1 Bedroom



1 Bathroom



1 Level



1 Parking space

OTHERS

- Laundry room
- Balcony



***Available only on first floor.**



*The renderings and models of the units are illustrative and informative and may differ from the final product. Furniture is not included.

ARALIA - TYPE D



Lot area from 624.30 to 1603.82 ft².



1 Bedroom



1 Bathroom



1 Level



1 Parking space

OTHERS


- Laundry room
- Garden*





*The renderings and models of the units are illustrative and informative and may differ from the final product. Furniture is not included.

DRACENA - TYPE A

 Lot area from 516.66 to 699.65 ft².

 0 Bedrooms

 1 Bathroom

 1 Level

 1 Parking space

OTROS
• Balcony



*The renderings and models of the units are illustrative and informative and may differ from the final product. Furniture is not included.

DRACENA - TYPE B

 Lot area from 559.72 to 699.65 ft².

 0 Bedrooms

 1 Bathroom

 1 Level

 1 Cajón de estacionamiento

OTHERS
• Balcony



*The renderings and models of the units are illustrative and informative and may differ from the final product. Furniture is not included.

DRACENA - PENTHOUSE



Lot area from 527.43 to 699.65 ft².



0 Bedrooms



1 Bathroom



1 Level



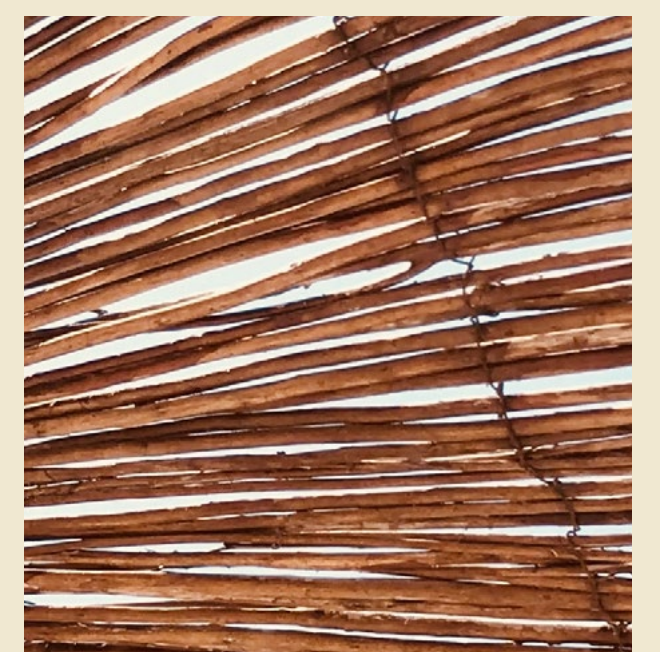
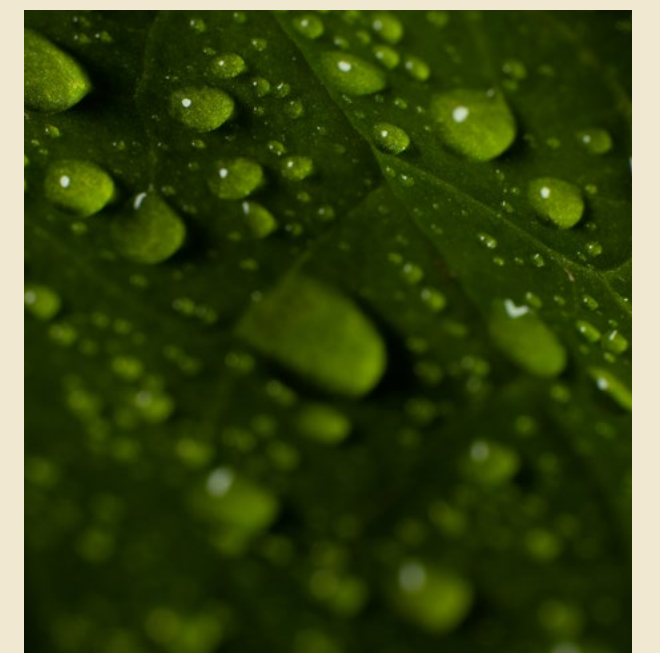
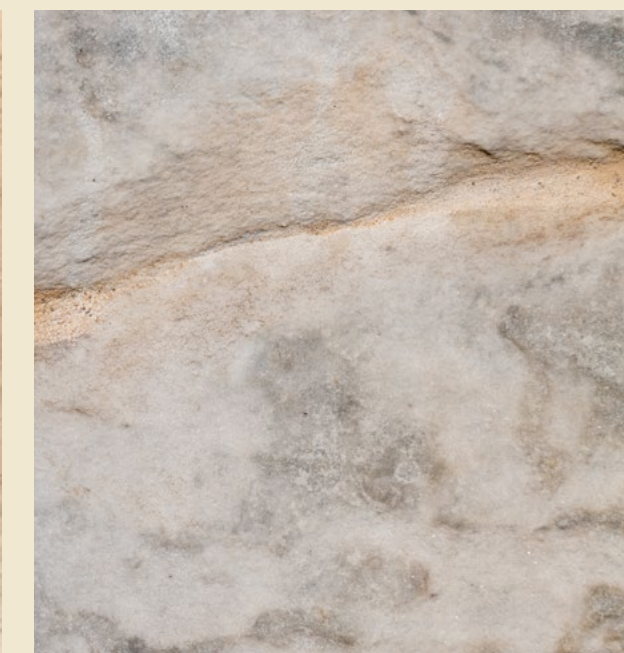
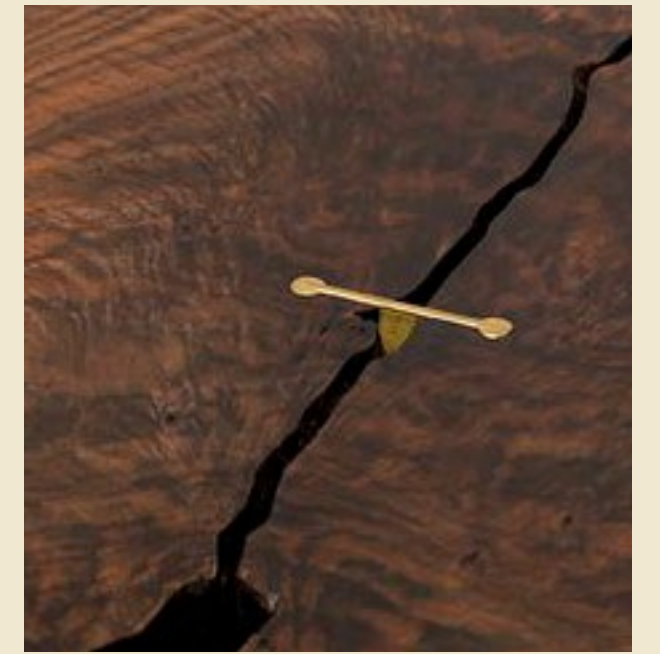
1 Parking space

OTHERS
• Balcony



FINISHES

- Interior floors and wet areas of showers in ceramic tiles imitating **rectified concrete**.
- **Fiorito Puebla marble** countertops in bathrooms.
- The main door made of pine frame with plywood and **Tzalam type endueled**.
 - **Metallic elements in black color** for stairs.
- **Uniblock chukum tone** finish on walls and interior ceiling.
 - Integral kitchen with crystal gold **granite countertop**.
 - **Tzalam laminate** closets and kitchen.
- **Bahareque** in interior walls and top of the exterior wall.
 - Exterior terraces of **washed concrete** in gray tone.
- Facades with details of **Mayan stone** in an irregular format as cladding.







AMENITIES AND SERVICES



Residential swimming pool (Swimming lane: 98.42 x 10.33 ft)



Panoramic infinity pool (19.685 x 42.65 ft)



2 Air conditioned gyms



Kids pool



Barbecue area pergola



Meetings area



Recreation area



Guest parking



Hammock area



Pet park



Bike parking



Playground